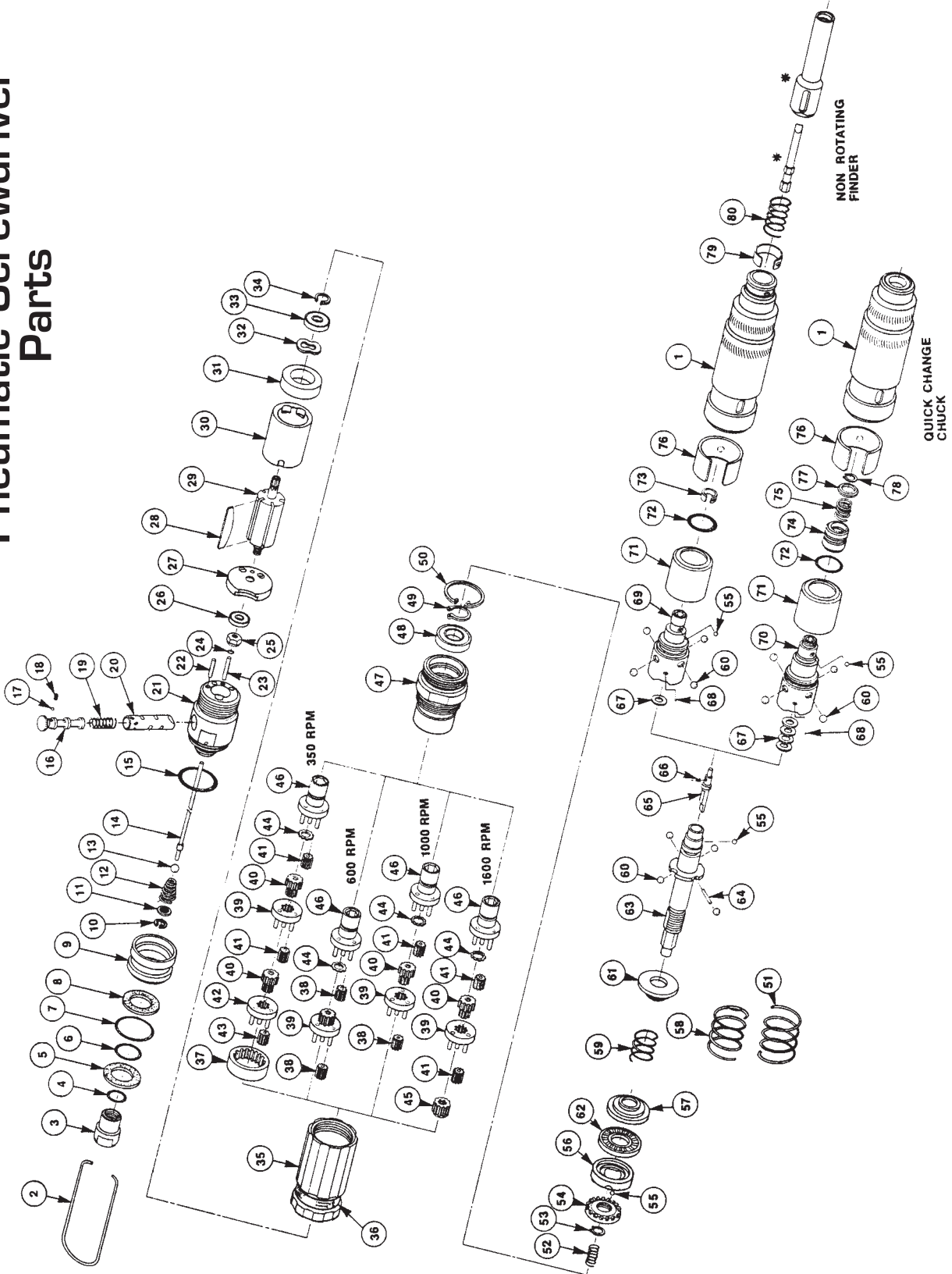




Pneumatic Torque Tools

8600 Series Pneumatic Screwdriver Parts





Pneumatic Torque Tools

Parts List

Item No.	Description	Part NO.
1	Clutch Housing, Assy. Models 8601, 8602, 8603, 8604 Models 8605, 8606, 8607, 8608	9905725 9905727
2	Bail	9966371
3	Inlet Bushing	9986007
4	O-Ring	9946371
5	Muffler	9986943
6	O-Ring	9966328
7	O-Ring	9926513
8	Muffler	9986034
9	Sleeve	9986023
10	Retaining Ring	9926369
11	Strainer	9926306
12	Valve Spring	9986925
13	Valve Ball	9986903
14	Push Rod Assy. 350 RPM Models 600 RPM, 1000 RPM, & 1600 RPM Models	9905718 9905709
15	O-Ring	9986546
16	Valve	9986010
17	CHROME STEEL BALL, 3/32 DIA. (1)	9926349
18	SETSCREW	9966729
19	REVERSE VALVE SPRING	9986033
20	Valve BUSHING	9986011
21	Valve HOUSING	9986003
22	Pin, Dowel	9961558
23	Pin, Dowel	9986325
24	O-Ring	9966326
25	Lock Nut	9986942
26	Bearing	9926247
27	Rear Plate	9986008
28	Roteto Blade (5 Req)	9986913
29	Rotor	9986912
30	Cylinder	9986009
31	Front Plate	9986915
32	Wave Washer	9996925
33	Bearing	9966331
34	Retaining Ring	9996924
35	Housing 350 RPM Models 600 RPM, 1000 RPM, & 1600 RPM Models	9986006 9986005

Item No.	Description	Part NO.
36	Nameplate	9986024- 9986031
37	INTERNAL GEAR	9986957
38	Idle Gear 600 RPM Models (6 Req) 100 RPM Models (3 Req)	9986917
39	Gear Plate Assy 350 RPM, 1600 RPM Model 600 RPM Models 1000 RPM Models	9905715 9905716 9905711
40	Pinion 360 RPM Models (2 Req) 1000 RPM Models (1 Req) 1600 RPM Models (1 Req)	9986919
41	Idle Gear 350 RPM Models (6 Req) 1000 RPM Models (3 Req) 1600 RPM Models (6 Req)	9986921
42	Gear Plate Assy 350 RPM Models	9905711
43	Idle Gear 350 RPM Models (3 Req)	9986917
44	Retaining Ring	9926947
45	Pinion 1600 RPM Models	9986951
46	Output Spindle Assy. 350 RPM, 1000 RPM, & 1600 RPM Models 600 RPM Models	9905723 9905717
47	Internal Gear	9986916
48	Bearing	9986922
49	Retaining Ring	9936906
50	Retaining Ring	9986923
51	Spring	9986118
52	Spring	9986926

Item No.	Description	Part NO.
53	Retaining	9926955
54	Nut	9986117
55	Steel Ball, 1/8 Dia. (3 Req)	9926353
56	Bearing Ring WASHER	9986115
57	Washer; CamSpring	9986931
58	Spring	9986933
59	Spring	9986932
60	Steel Ball, 3/16 DIA. (8 Req)	9996932
61	Washer	9986114
62	Bearing	9986934
63	Spindle, Clutch	9986113
64	Pin, Dowel	9986924
65	LEVER	9986936
66	Spring	9986937
67	Thrust Washer Models 8601, 8602, 8603, 8604 (4 Req) Models 8605, 8606, 8607, 8608 (1 Req)	9986939
68	Chrome Steel Ball (18 Req)	9926349
69	Clutch Cam, Finder	9986112
70	Clutch Cam, Quick Change	9986111
71	Sleeve Clutch	9986116
72	O-Ring	9926918
73	Bit Spring	9926950
74	Sleeve, Chuck	9986021
75	Spring, Chuck	9986020
76	Spring, Chuck	9986013
77	Washer Chuck	9986019
78	Retaining Ring	9936906
79	C-Spring Assy. Models 8605, 8606, 8607, 8608	9905580
80	Finder Springs Models 8605, 8606, 8607, 8608	9986945

1600 RPM	1000 RPM	600 RPM	350 RPM
Model 8601 Yellow Spring 5-16 LBF-IN	Model 8602 Red Spring 6-30 LBF-IN	Model 8603 Green Spring 6-40 LBF-IN	Model 8604 Green Spring 6-40 LBF-IN
Model 8605 Yellow Spring 5-16 LBF-IN	Model 8606 Red Spring 6-30 LBF-IN	Model 8607 Green Spring 6-40 LBF-IN	Model 8608 Green Spring 6-40 LBF-IN

"CLUTCH SPRING REMOVAL"

Remove (52) and retaining ring (53) using retaining ring pliers. Using a number two phillips head crewdriver, insert pin into hole provided between the nut (54) and bearing ring washer (56) turning clockwise until nut can be removed. Slide remaining parts in order off of spindle shaft: (63) so that spring can be removed. Insert desired spring and re-assemble the clutch.