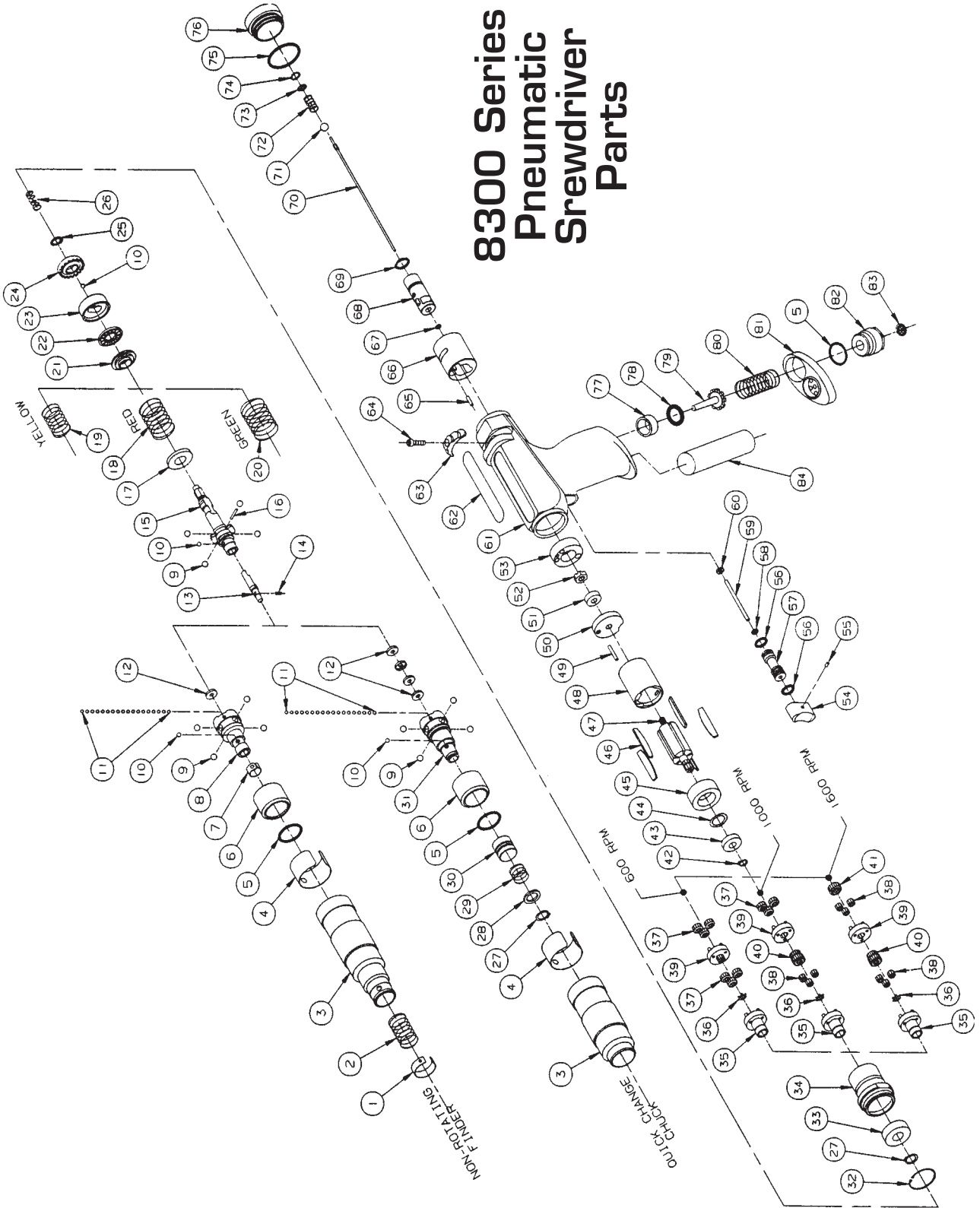




# Pneumatic Torque Tools

## 8300 Series Pneumatic Screwdriver Parts





# Pneumatic Torque Tools

## Parts List

Item No.	Description	Qty.	Part No.
1	C-Spring Assembly Model 8305, 8306, 8307	1	9905580
2	Finder Spring Model 8305, 8306, 8307	1	9986945
3	Clutch Housing Assembly Model 8301, 8302, 8303 Model 8305, 8306, 8307	1	9905725 1 9905727
4	Spring Cover	1	9986013
5	O-Ring, .6114 x .070 BUNA-N	2	16117
6	Clutch Sleeve	1	9986116
7	Bit Spring Model 8305, 8306, 8307	1	9926950
8	Finder Clutch Cam Model 8305, 8306, 8307	1	9986112
9	Steel Ball, 3/16 Dia	8	9996932
10	Steel Ball, .125 Dia	3	9926353
11	Steel Ball, .094 Dia	18	9926349
12	Thrust Washer Model 8301, 8302, 8303 Model 8305, 8306, 8307	4	9986939 1 9986939
13	Lever	1	9986936
14	Spring	1	9986937
15	Clutch Spindle	1	9986113
16	Dowel Pin, .063 x .438	1	9986924
17	Cam Spring Washer	1	9986114
18	Clutch Spring, Red (6-30 LBF-IN) Model 8302, 8303, 8306, & 8307	1	9986933
19	Clutch Spring, Yellow (5-16 LBF-IN) Model 8301, 8305	1	9986932
20	Clutch Spring, Green (6-40 LBF-IN) Model 8303, 8307	1	9986118
21	Cam Spring Washer	1	9986931
22	Thrust Bearing	1	9986934
23	Bearing Ring Washer	1	9986115
24	Adjustment Nut	1	9986117
25	Retainig Ring, Ext., .312 Dia	1	9926955
26	Spring	1	9986926
27	Retainig Ring, Ext., .375 Dia	2	9936906
28	Chuck Washer		
29	Chuck Spring Model 8301, 8302, 8303 Model 8301, 8302, 8303	1	9986019 1 9986020
30	Chuck Sleeve Model 8301, 8302, 8303	1	9986021
31	Quick Change Clutch Cam Model 8301, 8302, 8303	1	9986111

Item No.	Description	Qty.	Part No.
32	Retaining Ring, Int., .875 Dia	1	9986923
33	Ball Bearing, .375 x .875 x .2812	1	9986922
34	Internal Gear	1	9986916
35	Output Spindle Assembly Model 8303, 8307 Model 8301, 8302, 8305, & 8306	1	9905717 1 9905723
36	Retaining Ring, Int., .3112 Dia	1	9926947
37	Idler Gears Model 8303, 8307 (600 RPM) Model 8302, 8306 (1000 RPM)	6	9986917 3 9986917
38	Idler Gears Model 8302, 8306 (1000 RPM) Model 8301, 8305 (1600 RPM)	3	9986921 6 9986921
39	Gear Plate Assembly (1600 RPM)	1	9905715
40	Pinion Gear Model 8302, 8306 (1000 RPM) Model 8301, 8305 (1600 RPM)	1	9986919 1 9986919
41	Pinion Gear Model 8301, 8305 (1600 RPM)	1	9986951
42	Retaining Ring, Ext., .250 Dia	1	9996924
43	Ball Bearing, .250 x .625 x .196	1	9966331
44	Wave Washer	1	9996925
45	Front Plate	1	9986915
46	Rotor Blades	5	9986913
47	Rotor	1	9986912
48	Motor Cylinder	1	9980018
49	Dowel Pin, .094 x .625	1	9961558
50	Rear Plate	1	9986008
51	Ball Bearing, .1875 x .500 x .196, DS	1	9926247
52	Lock Nut	1	9986942
53	Valve Adapter	1	9980023

Item No.	Description	Qty.	Part No.
54	Trigger Rod Button	1	9980056
55	Set Screw, 4-40 x .125	1	16666
56	O-Ring, .239 x .070 BUNA-N	2	16101
57	Trigger Rod Bushing	1	9980006
58	O-Ring, .101 X .070 BUNA-N	1	16185
59	Trigger Rod	1	9980004
60	Trigger Disk	1	9980022
61	Pistol Grip Housing, Painted	1	9980057
62	Model Label Model 8301 Model 8302 Model 8303 Model 8305 Model 8306 Model 8307	1	9980026 1 9980027 1 9980028 1 9980030 1 9980031 1 9980032
63	Reverse Valve Cover	1	9980025
64	Socket Head Cap Screw, 6-32 x .500	1	16686
65	Dowel Pin, .094 x .375	1	9926215
66	Valve Housing	1	9980020
67	O-Ring, .056 x .060 BUNA-N	1	9966326
68	Reverse Valve	1	9980024
69	O-Ring, .364 x .070 BUNA-N	1	16102
70	Push Rod	1	9905709
71	Valve Ball	1	9986903
72	Valve Spring	1	9986925
73	Strainer	1	9926306
74	Retaining Ring, Int., .3112 Dia	1	9926369
75	O-Ring, .926 x 0.070 BUNA-N	1	9986546
76	End Cap	1	9980015
77	T-Valve Seat	1	9980008
78	O-Ring, .421 X .139 BUNA-N	1	16193
79	T-Valve	1	9980007
80	Compression Spring	1	9980021
81	Butt Plate	1	9980011
82	Inlet Fitting	1	9980009
83	Strainer	1	9980010
84	Internal Muffler	1	9980014

	1600 RPM	1000 RPM	600 RPM
	Model 8301 Quick Change Yellow Spring 5-16 LBF-IN	Model 8302 Quick Change Red Spring 5-30 LBF-IN	Model 8303 Quick Change Green Spring 5-40 LBF-IN
	Model 8305 Non-Rotating Finder Yellow Spring 5-16 LBF-IN	Model 8306 Non-Rotating Finder Red Spring 5-30 LBF-IN	Model 8307 Non-Rotating Finder Green Spring 5-40 LBF-IN