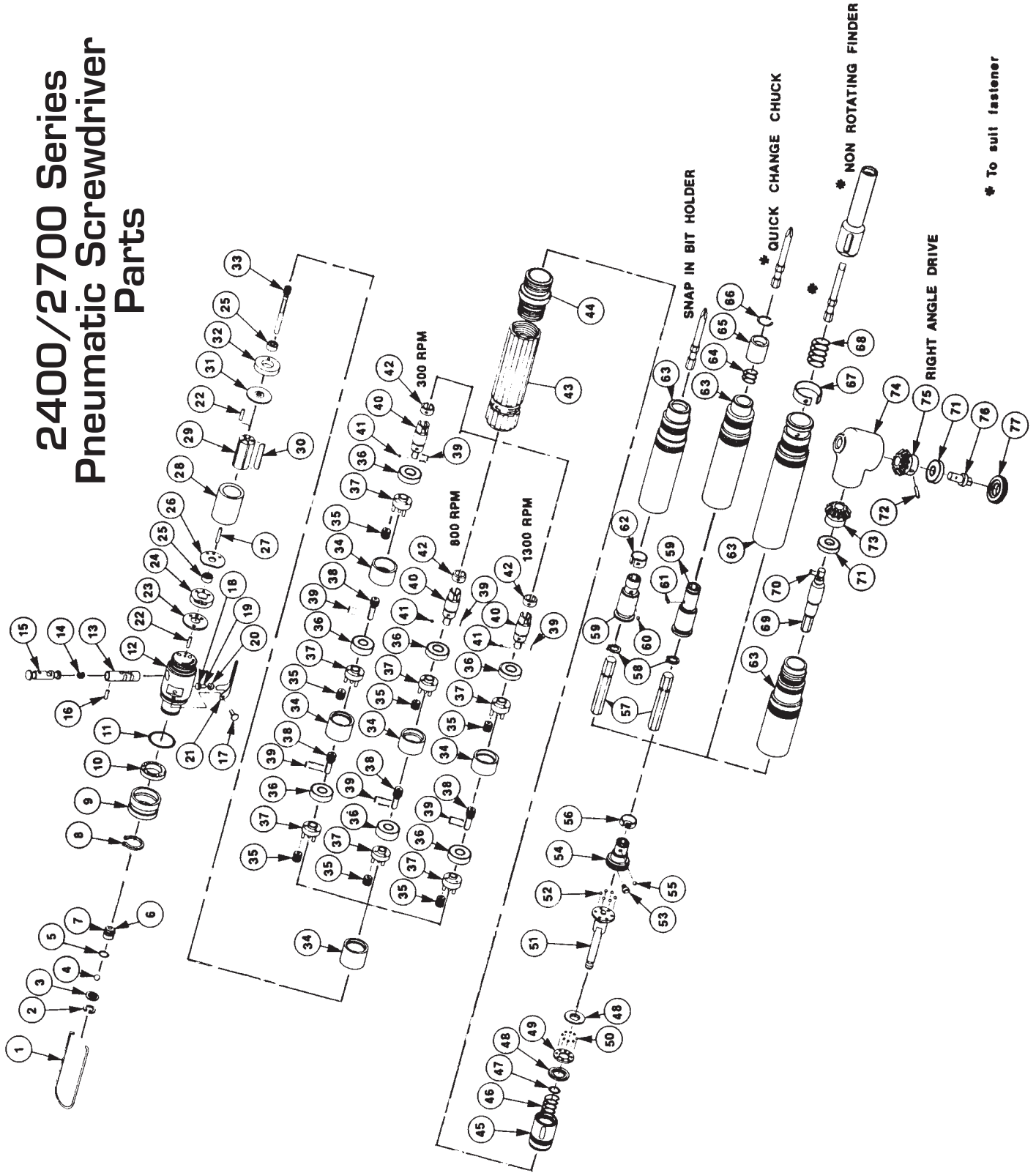




Pneumatic Torque Tools

2400/2700 Series Pneumatic Screwdriver Parts





Pneumatic Torque Tools

Parts List

Item No.	Description	Part No.
1	Ball	9926352
2	Retaining Ring, Int.	9926369
3	Strainer	9926306
4	Steel Ball 3/16" Dia (1 Req)	9996932
5	O-Ring	9936354
6	Valve Seat	9924025
7	O-Ring	9986521
8	Retaining Ring, Int.	9926917
9	Muffler Cap	9926916
10	Muffler	9926441
11	O-Ring	9926918
12	Head	9924012
13	Valve Bushing	9926016
14	Spring	9926014
15	Valve	9926015
16	Roll Pin	9926094
17	Stud, Round Head, Grooved (2 Req)	9924023
18	O-Ring	9966326
19	Valve Stem	9924026
20	Bushing, Valve Stem	9924027
21	Lever	9924020
22	Alignment Pin (2 Req)	9926254
23	Cover Plate	9926924
24	Bearing Ring	9926360
25	Bearing (2 Req)	9926245
26	Upper End Plate	9926925
27	Alignment Pin	9926212
28	Cylinder	9926019
29	Rotor	9926018
30	Rotor Blade (5 Req)	9926020
31	Lower End Plate	9926017
32	Lower Bearing Ring	9926919
33	Spindle Gear 300 RPM Models 800 RPM Models 1300 RPM Models	9926021 9926022 9926021
34	Ring Gear 300 RPM Models (3 Req) 800 RPM Models (2 Req) 1300 RPM Models (2 Req)	9926929
35	Idle Gear 300 RPM Models (9 Req) 800 RPM Models (6 Req) 1300 RPM Models , (6 Req)	9926213 9926537 9926213

Item No.	Description	Part No.
36	Bearing 300 RPM Models (3 Req) 800 RPM Models (2 Req) 1300 RPM Models (2 Req)	9926930
37	Idle Gear Plate Assy 300 RPM Models (3 Req) 800 RPM Models (2 Req) 1300 RPM Models (2 Req)	9905047 9905048 9905047
38	Short Spindle Gear 300 RPM Models (2 Req) 800 RPM Models (1 Req) 1300 RPM Models (1 Req)	9926922 9926969 9926922
39	Groove Pin 300 RPM Models (3 Req) 800 RPM Models (2 Req) 1300 RPM Models (2 Req)	9926331
40	Spindle	9926312
41	Chrome Steel Ball 3/32" Dia	9926349
42	Clutch Retaining Spring	9926358
43	Motor Housing 300 RPM Models 800 RPM Models 1300 RPM Models	9924022 9924021 9924021
44	Spindle Housing Assy	9905020
45	Sleeve Nut	9926778
46	Clutch Spring .5-2.5 LBF-In (Packed Loose in Box) 1.0-5.0 LBF-In (Packed Loose in Box) 2.0-10.0 LBF-In (Factory Installed)	9926781 9926782 9926783
47	O-Ring	9926342
48	Ball Race (2 Req)	9926315
49	Ball Retainer	9926316
50	Chrome Steel Ball 1/16" Dia (8 Req)	9926346
51	Spindle	9926777
52	Chrome Steel Ball 3/32" Dia (6 Req)	9926349
53	Cap Screw	9926356
54	Cam	9926779
55	Chrome Steel Ball 1/8" Dia (1 Req)	9926353
56	Spring	9926950
57	Driver Models 2401, 2402, 2403, 2404, 2405, 2406	9924014
58	Retaining Ring Models 2401, 2402, 2403, 2404, 2405, 2406	9924015
59	Bit Driver Models 2401, 2402, 2403 Models 2404, 2405, 2406	9926949 9905932
60	Chrome Steel Ball 1/8" Dia (1 Req) Models 2401, 2402, 2403	9926353

Item No.	Description	Part No.
61	Chrome Steel Ball 1/32" Dia (1 Req) Models 2404, 2405, 2406	9926349
62	Spring Models 2401, 2402, 2403	9926950
63	Clutch Housing Assy Models 2401, 2402, 2403 Models 2404, 2405, 2406 Models 2407, 2408, 2409 Models 2701, 2702, 2703	9902432 9902431 9924024 9902430
64	G.C. Spring Models 2404, 2405, 2406	9926029
65	G.C. Collet Models 2404, 2405, 2406	9926030
66	Round Section Retaining Ring Models 2404, 2405, 2406	9926031
67	C Spring Models 2407, 2408, 2409	9905580
68	Finder Spring Models 2407, 2408, 2409	9920166
69	Input Shaft Models 2701, 2702, 2703	9946511
70	Key Models 2701, 2702, 2703	9946512
71	Ball Bearing (2 Req) Models 2701, 2702, 2703	9966331
72	Roll Pin Models 2701, 2702, 2703	9986466
73	Driving Gear MMModels 2701, 2702, 2703	9946434
74	Angle Head Assy Models 2701, 2702, 2703	9905144
75	Driven Gear Models 2701, 2702, 2703	9946510
76	Spindle Assy Models 2701, 2702, 2703	9905147
77	Bearing Retainer Models 2701, 2702, 2703	9946347

1300 RPM	800 RPM	300 RPM	Output Type
2401	2402	2403	Snap In Holder
2404	2405	2406	G.C. Chuck
2407	2408	2409	Non-Rotating Finder
2701	2702	2703	Rt. Angle Drive
0.5-5 LBF-In	0.5-8 LBF-In	0.5-12 LBF-In	